



Product Data Sheet:

Composite-Cable Duct with glass-mat reinforcement

The Composite-cable duct system produced with polyester resin combines an optimum price/performance ratio.

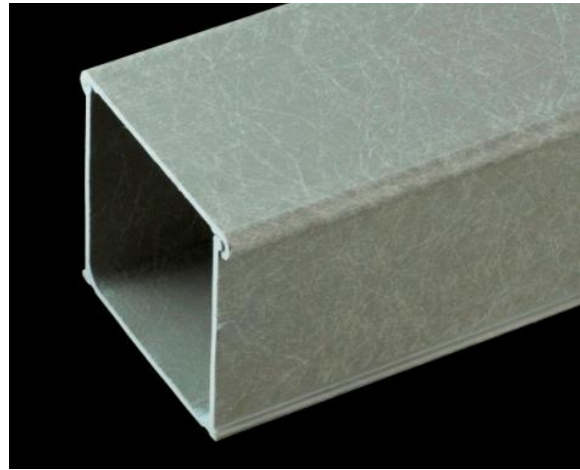
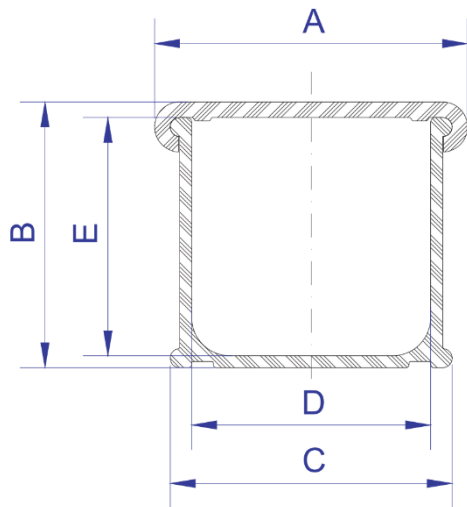
The Composite-cable duct system produced with acrylic resin is seen most often in closed rooms, tunnels and airports.

Material composition: Polyester-/Acrylic resin with unidirectional glass fibre roving (longitudinal reinforcement) and glass-matting reinforcement (transverse reinforcement)

Production: Pultrusion

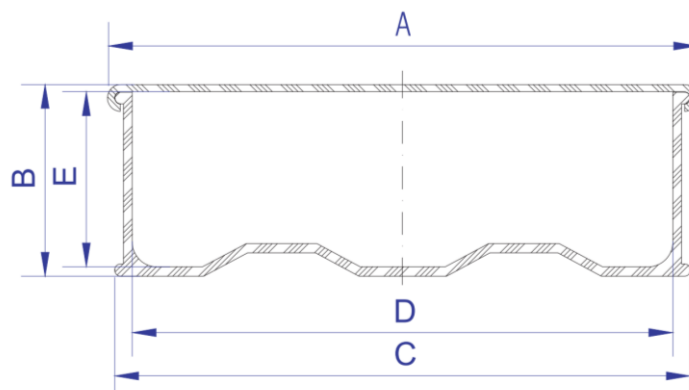
Technical data:

| | Test Method | Unit | Polyester | Acryl resin |
|-------------------------------------|-----------------|-------------------|-----------------------|----------------------|
| Specific weight | ASTM D792 | g/cm ³ | 1.8 | 2 |
| Glass content by weight | ISO 1172 | % | 60 | 50 |
| Tensile strength | ASTM D638 | MPa | 400 | 300 |
| Tensile modulus | ASTM D638 | GPa | 26 | 20 |
| Flexural strength | ASTM D790 | MPa | 400 | 300 |
| Flexural modulus | Full Bending | GPa | 25 | 20 |
| Compressive strength | ASTM D695 | MPa | 220 | 150 |
| Compressive modulus | ASTM D695 | GPa | 20 | 15 |
| Impact strength(Charpy) | ASTM D256 | kJ/m ² | 180 | 150 |
| Water absorption | ISO 62 | % | 0,4 | 0,4 |
| Dielectric strength | ASTM D149 | kV/mm | 5 | 10 |
| Surface resistivity | ASTM D257 | Ω | 10 ¹² | 10 ¹³ |
| Coefficient of Thermal Expansion | ASTM D696 | K ⁻¹ | 11 x 10 ⁻⁶ | 9 x 10 ⁻⁶ |
| Thermal conductivity | ASTM C177 | W/mK | 0,35 | 0,3 |
| Toxicity index | CEI 2037 part 2 | | <2 | <1 |
| M classification | NF P 92-501 | Class | M3 | M1 (0%) |
| F classification | NF F 16-101 | Class | F2 | F0 |
| I classification | NF F 16-101 | Class | I4 | I0 |
| Surface flame propagation | BS 476 part 7 | Class | 3 | 1 |
| Flammability index (glow wire) | IEC 695-2-1 | °C | / | 960 |
| Flammability test (vertical sample) | UL 94 | Grade | V0 | V0 |
| Halogen content | IEC 61249-2-21 | | | No |



| Type | A | B | C | D | E |
|------------|-------|-----|-----|-----|-----|
| 50 x 50 | 64.5 | 55 | 59 | 50 | 50 |
| 80 x 80 | 95.4 | 85 | 90 | 80 | 80 |
| 100 x 50 | 115.4 | 55 | 110 | 100 | 50 |
| 120 x 120 | 136.4 | 125 | 131 | 120 | 120 |
| 140 x 70 | 156.4 | 75 | 151 | 140 | 70 |
| 140 x 100 | 156.4 | 105 | 151 | 140 | 100 |
| 140 x 140 | 156.4 | 145 | 151 | 140 | 140 |
| *175 x 70 | 191.4 | 75 | 186 | 175 | 70 |
| *175 x 120 | 191.4 | 125 | 186 | 175 | 120 |
| *175 x 175 | 191.4 | 180 | 186 | 175 | 175 |
| 200 x 80 | 216.5 | 85 | 211 | 200 | 80 |
| 300 x 80 | 316.4 | 82 | 311 | 300 | 76 |

Dimension in mm, * only polyester formulation



| Type | A | B | C | D | E |
|----------|-------|----|-----|-----|----|
| 400 x 80 | 417.4 | 86 | 411 | 400 | 80 |
| 500 x 80 | 517.4 | 86 | 511 | 500 | 80 |
| 600 x 80 | 617.4 | 86 | 611 | 600 | 80 |

Dimension in mm